



Product Information

# Composite Sheet / Thermal Conductive Liquid

## INDONG ELECTRONICS, Inc.

Main Office: 54, Seo-ro, Gajang Industrial Complex, Osan-si, Gyeonggi-do 18103, Korea T.+82-375-7703 F.+82-31-7748  
Seoul Office: 5F, 20, Seoun-ro, Seocho-gu, Seoul 06734, Korea T.+82-2-2038-0882 F.+82-2-2038-0970

# Thermal Solution

## Product Image



Product images are for illustrative purposes only and may differ from the actual product.



## Composite Sheet

The composite graphite sheet is high in purity, resulting from application of Indong Electronics' ('IDE') IP protected extraction, purifying processing of the by-product carbon sludge at steel mills. Our patented processing technology not only reduce manufacturing costs significantly also enhances thermal conductive efficiency. It is offered in roll types and is superior to natural graphite in thermal management and can completely replace copper foil. (IDE proprietary/IP protected)

### ⚙ Characteristics

- Completely replaces natural graphite / copper foil
- Superior thermal mgmt. 400~800W/mk (varies in thickness)

### ⚙ Application

- Display, smartphone, computer, tablet PC
- Electronic device, LED (OLED), IOT device
- Telecommunications equipment, automotive equipment
- Power converter, power supply, medical devices/equipment
- Home electronics and any device / equipment with excessive heat energy release

## Product Image



Name	CAS No.	Content
Binder	Secrete	<40%
Filler	Carbon	<40%
Solvent	Composite	<5%
Cyclohexane	108-94-1	<5%
Xylene	1330-20-7	<10%

## Composite Sheet + Edge Coating

IDE proprietary solution that consists of thermal conductive tapes and thermal conductive liquids outperforms conventional Graphite+PTE+Copper solutions in both performance and cost-efficiency.

### ⚙ Advantages

- Comes with thermally conductive tacky tapes for mass production in inorganic or organic forms
- Improved thermal conductivity
- Can be adhesive to any materials including metal, non-metal, plastic, ceramic or films etc.

### ⚙ Application

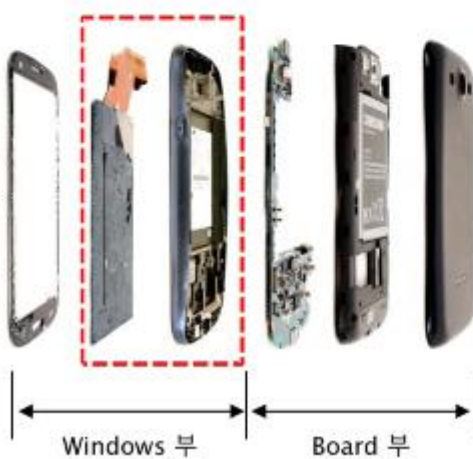
- Smartphone, Smart TV, Table PC, Laptop, set-top box, black-box, navigation, LED lighting

# Application

## LED TV



## Smart Phone



◆ Placement in red boxes

